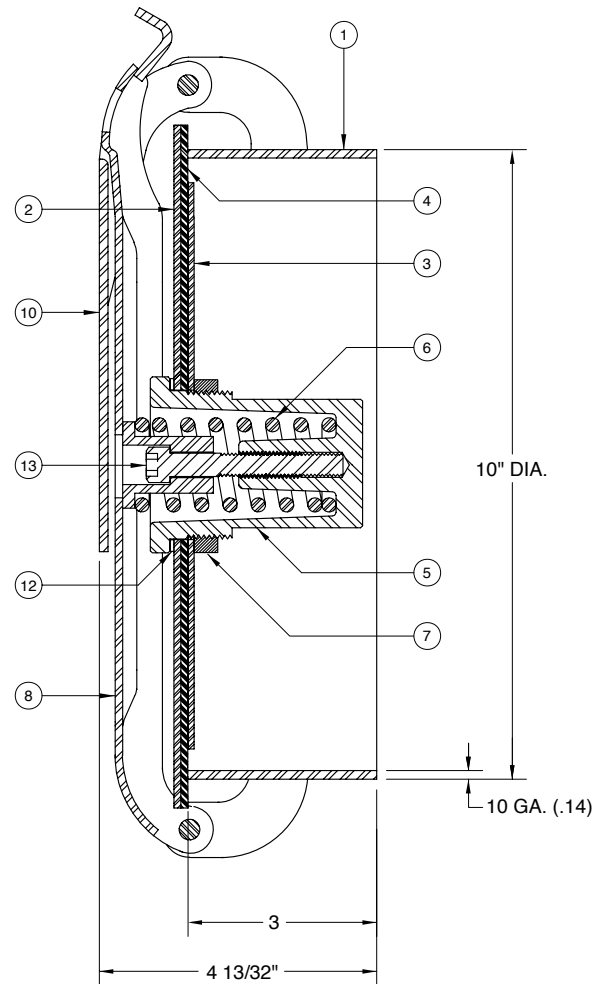
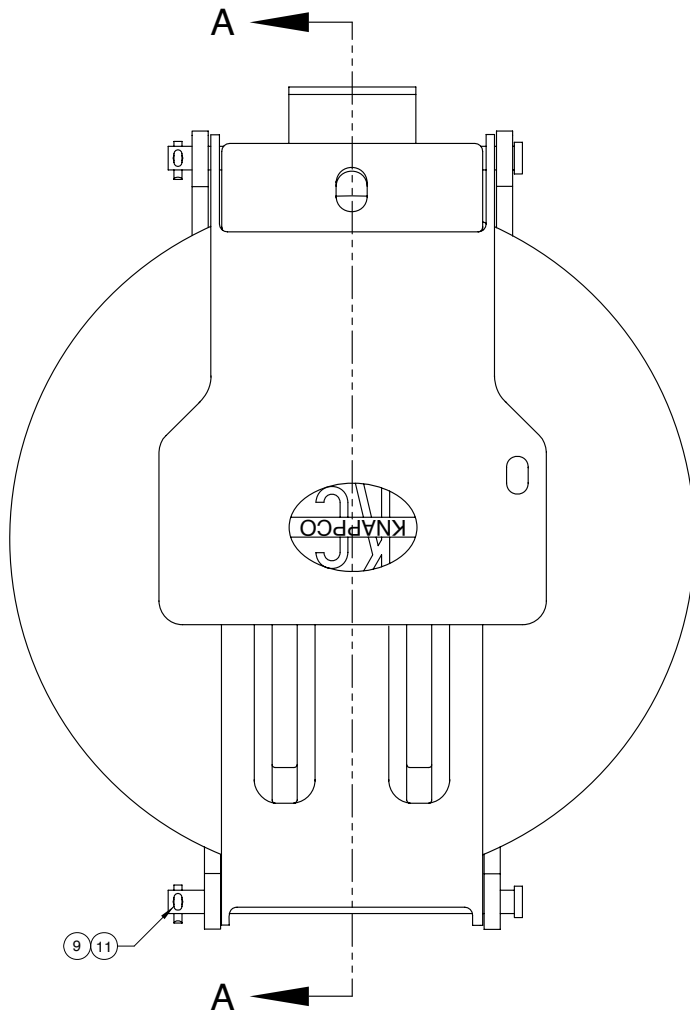




AN **OPW** FLUID TRANSFER GROUP COMPANY

LJ2210 10" Fill Cover Assembly



SECTION A-A

ITEM	PART NUMBER	DESCRIPTION	QTY.
1	3633	WELD RING ASSY (STEEL)	1
2	1240	FILL COVER (STEEL)	1
3	1242	GASKET RETAINER (STEEL)	1
4	3429	GASKET (BUNA)	1
5	4154 / 4195	SPRINGWELL / HELICOIL	1
6	4192	SPRING (PLATED)	1
7	1200	SPRINGWELL NUT (PLATED)	1
8	1236	STRONGBACK ASSY (STEEL)	1
9	2106	CLEVIS PIN (PLATED)	2

ITEM	PART NUMBER	DESCRIPTION	QTY.
10	1125	LATCH (STEEL)	1
11	1045	COTTER PIN (PLATED)	2
12	1199	GASKET (HI-TEMP.)	1
13	4194	CAP SCREW (PLATED)	1

ALTERNATE SEALING MEDIA

PART NUMBER	DESCRIPTION
4949	GASKET (VITON)
3956	GASKET (TEFLON / NEOPRENE)



PHONE: (816) 741-6600 • (888) 526-5657 • Fax: (816) 741-1061
 4304 Mattox Road • Kansas City, MO 64150 • www.knappco.com