



Two-Wire Optic Sensor

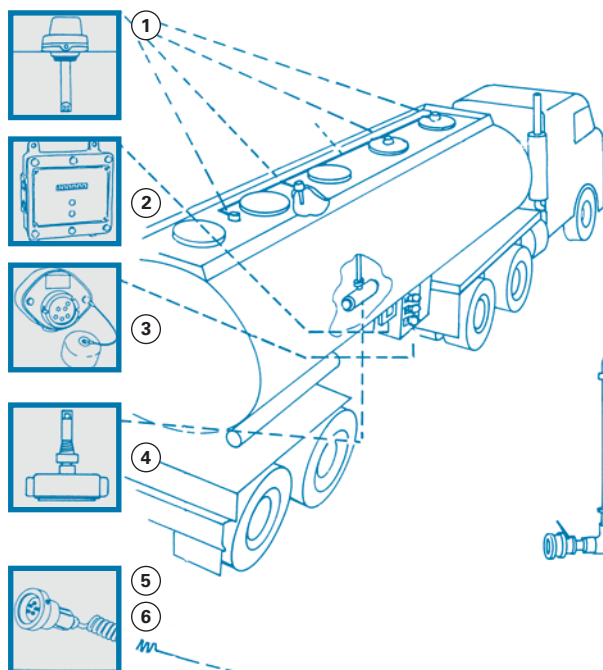
The OPWFTG Two-Wire Optic Sensors are designed for overfill prevention of liquid petroleum products. The Two-Wire Optic Quick Start Sensor is designed as an alternative for the Two-Wire Thermistor Sensor. Not only are they instantly permissive and specially designed for optimal communication with our 8500E-series Rack Monitors (conforming to EN13922); but they are also compatible with all other brands of Rack Monitors (which conform to EN13922 standards as well).

Features and Benefits

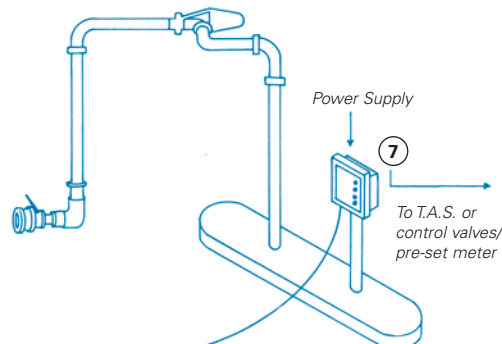
- **Conforms to API RP 1004, ATEX and EN13922**
- **Intrinsically safe**
- **Self checking**
- **Temperature range -20°C to +70°C**
- **Certified for use in zone 0**
- **Instant permissive signal** (no warm-up time)
- **Easy adjustable shaft** when shorter length is necessary
- **Immediate system shutdown** in case of compartment 'wet' detection (250 ms)
- **Immediate re-permit** in case of compartment 'dry' detection



1551-007B Two-Wire Optic Sensor



To tank-truck sensors



Ordering Specifications

Two-Wire Optic Sensor

1551-007B	Adjustable two-wire optic sensor, 7" tube, BSPP, quick start, in accordance with EN13922 standards
1551-0018B	Adjustable two-wire optic sensor, 16" tube, BSPP, quick start, in accordance with EN13922 standards

Trailer Equipment List

- 1 | Sensor(s):
(One Per Compartment)
Plus Sensor Cable
- 2 | On-board Control Monitor / ROM
- 3 | Rack-Compatible Socket(s)
- 4 | Retain Bottom Sensor

Loading Rack Equipment

- 5 | Rack Monitor
- 6 | Connecting Plug
- 7 | Plug/Monitor Cord Set