

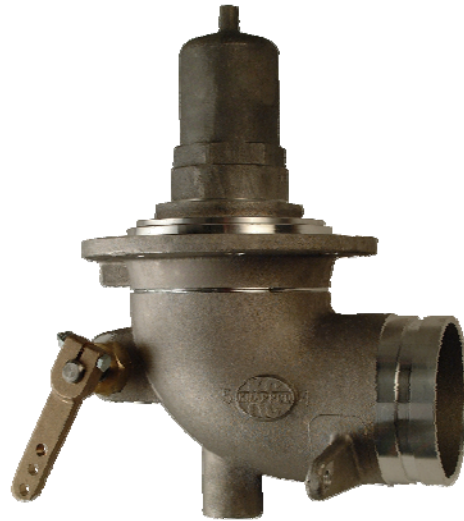
## High Flow Emergency Valves

### Civacon's Universal High Flow Emergency Valves are designed to be used for Mechanical Trailer Operations

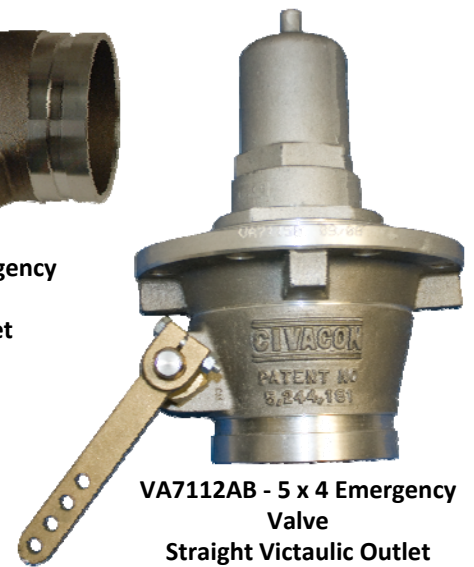
The Civacon™ Universal Series High Flow Emergency Valves have been designed with no moving parts in the flow path for superior flow rates, faster drops and maximum profits. Castings have been streamlined for all configurations to decrease weight, improve flow and fit easier into those tight installations.

Universal High Flow Emergency Valves conform with HM183 standards. The Universal High Flow Emergency Valve has been field tested in harsh environments and will withstand temperatures from -40°F to 150°F (-40°C to 66°C).

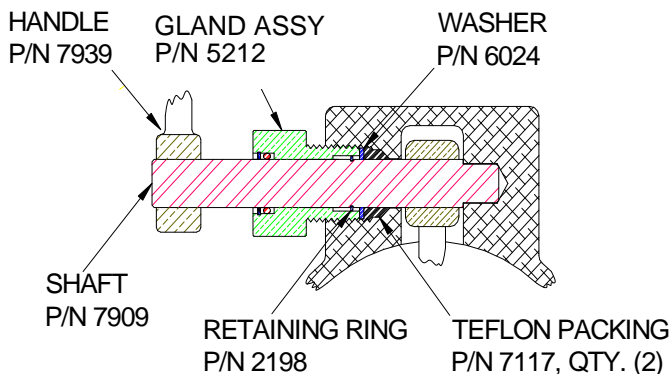
All Emergency Valves feature a frangible connection at the shear groove. This durable, open-bore design reduces loading, unloading and maintenance time so Civacon™ equipped trucks spend more time on the road.



**VA5112A - 5 x 4 Emergency Valve**  
90° Victaulic Outlet



**VA7112AB - 5 x 4 Emergency Valve**  
Straight Victaulic Outlet



### Features & Benefits

- Compatible with 4" TTMA sump applications
- Compatible with all manufacturer's standard mechanical operators
- Reduces backflow problems into adjacent compartments on manifold discharge plumbing
- Optional drain screen and cable mounting bracket (Sold Separately)
- Optional slotted mounting holes simplify installation
- Aluminum housing with a choice of seal materials
- Available as a 5" x 4" elbow or straight with Victaulic or flanged outlets.
- Compatible with diesel, biodiesel, gasoline, ethanol and methanol
- Available in a variety of configurations for standard compatibility and easy installation (see chart on back)

# High Flow Emergency Valves

## Specifications

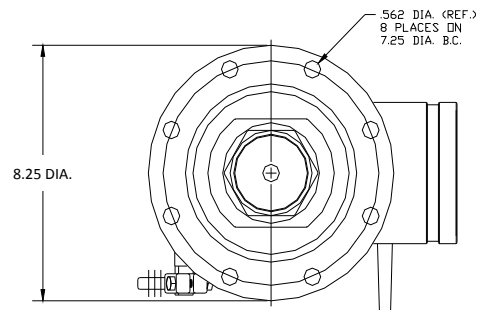
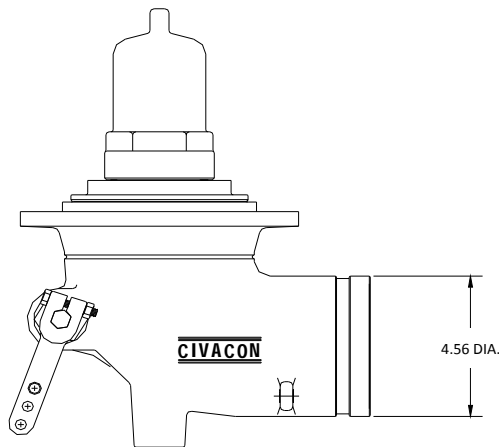
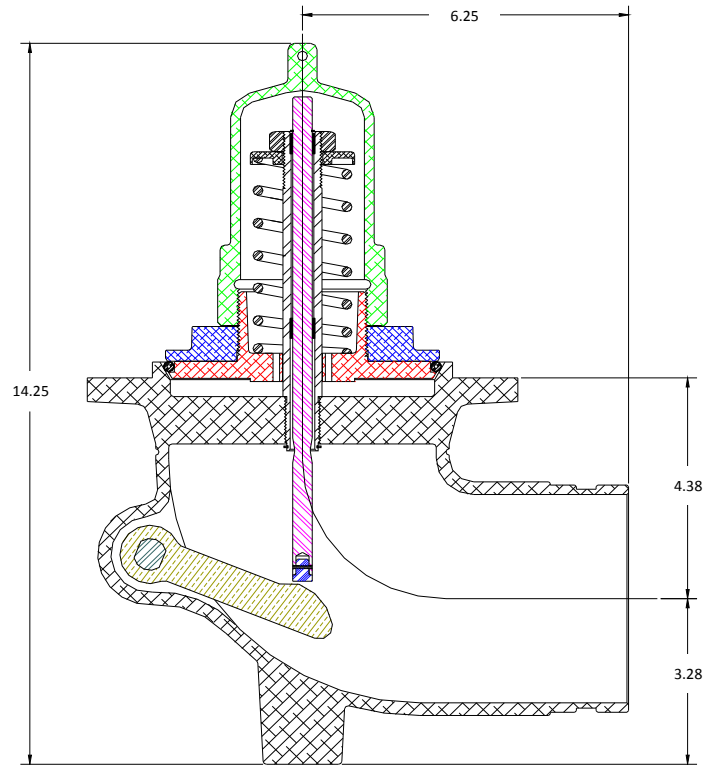
**Product Numbers:**  
See Chart Below (VA5112A diagram Shown)

**Materials:**  
Aluminum, Brass and Stainless Steel

**Dimensions:**  
Height - 14.25"  
Width - 10.36"

**Weight:**  
11.2 lbs. (5.08 kg)

**Temp. Rating:**  
-40° F to 150° F (-40° C to 66° C)



## Ordering Specifications

### High Flow Emergency Valves

VA5112A	90° Elbow/Victaulic Mechanical Valve Tef-o-Sil
VA6112A	90° Elbow/Flanged Mechanical Valve Tef-o-Sil
VA7112AB	Straight/Victaulic Mechanical Valve Tef-o-Sil w/Bracket
VA8112AB	Straight/Flanged Mechanical Valve Tef-o-Sil w/Bracket