

A

B

C

D

THIS DRAWING IS NOT TO BE SCALED. FOR ADDITIONAL INFORMATION. PLEASE CONTACT OUR ENGINEERING DEPT.

REVISIONS

LTR	ECN #	DESCRIPTION	DRAWN	APPROVED	DATE
A	-		JPR	NAC	05-22-03

1

1

2

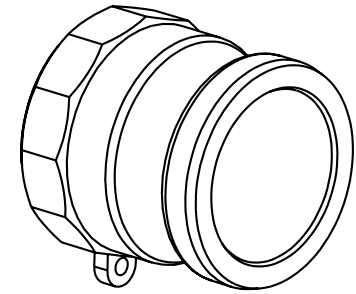
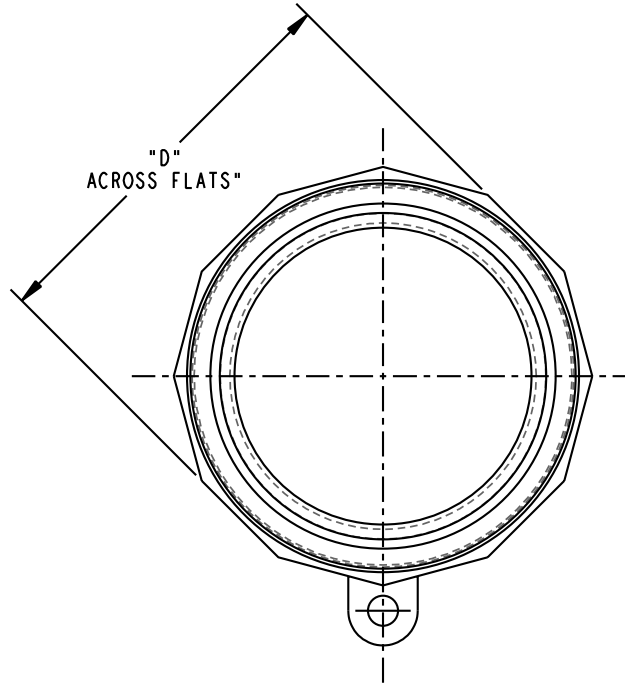
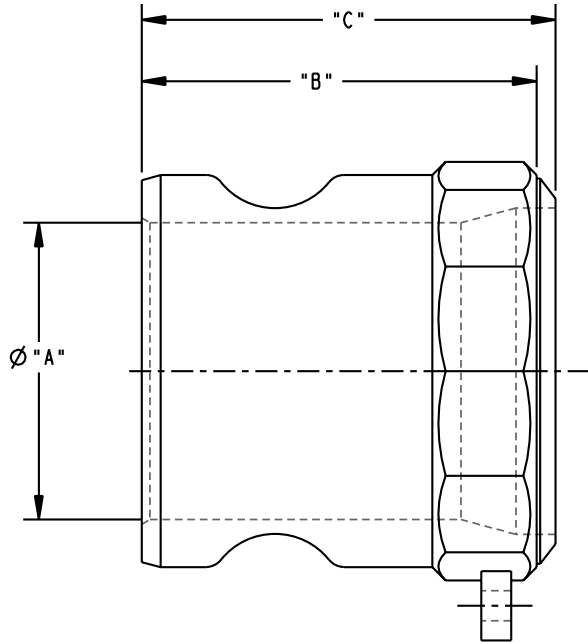
2

3

3

4

4



4" 633FW	3.84	3.19	3.50	5.03
3" 633FW	2.88	2.78	2.97	4.00
2-1/2" 633FW	2.19	2.75	2.88	3.19
2" 633FW	1.88	2.50	2.62	2.56
1-1/2" 633FW	1.44	2.12	2.19	2.19
1-1/4" 633FW	1.12	2.12	2.25	1.88
1" 633FW	0.94	1.91	2.03	1.50
3/4" 633FW	0.78	1.50	1.62	1.31
1/2" 633FW	0.56	1.50	1.62	1.31
ADAPTOR SIZE	"A"	"B"	"C"	"D"

CONFIDENTIAL THIS DOCUMENT CONTAINS INFORMATION WHICH IS PROPRIETARY TO OPW, AND SHOULD BE PROTECTED ACCORDINGLY.

DESCRIPTION: SST KAMLOK ADAPTOR - BUTT WELD

UNLESS OTHERWISE SPECIFIED  
 TOLERANCES ON DIMENSIONS  
 3 DECIMALS +/- 0.005  
 2 DECIMALS +/- 0.015  
 1 DECIMAL +/- 0.030  
 ANGLES +/- 1/2 DEG  
 MACHINED SURFACES 125 RMS MAX

SIGNATURES	MO-DA-YR
DRAWN: JPR	06-11-01
CHECKED: NAC	06-18-01
MATERIAL: 316 SST	WEIGHT:

REV:	DESCRIPTION
A	PART NUMBER: 633FW
C	SCALE: NONE

OPW Engineered Systems  
 A DOVER Resources Company  
 Lebanon, Ohio 45036 USA  
 3D GENERATED DRAWING

A

B

C

D