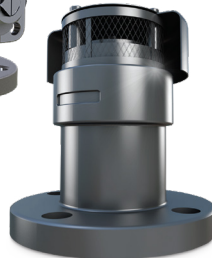


A COMPLETE VALVE PACKAGE FROM ONE SOURCE



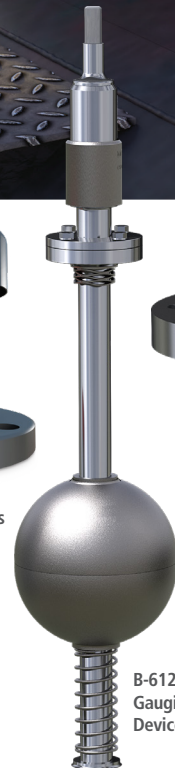
A-7200/A-7300
Top Transfer Valve



A-210/A-212
Vacuum Relief Valves



A-19075 Smart-Flow
Pressure Relief Valve



B-612
Gauging
Device



A-522 Ball Valve

The most Convenient Package in the Industry

Midland's combination of current products and new designs will help our customers meet these challenging industry requirements, along with meeting and exceeding the regulations that affect the entire rail tank car fleet.

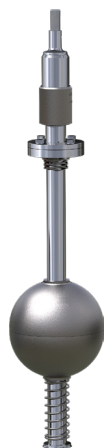
- Midland offers the most comprehensive valve package for a variety of general purpose car applications, including Pressure Relief Valves, Vacuum Relief Valves and Ball Valves
- Midland Gaging Devices deliver accurate level monitoring that ensures complete commodity loading every time while reducing the chance for overloading of the tank car
- Fellow OPW Fluid Transfer Solutions member OPW Engineered Systems provides Kamvalok® and Drylok™ valves and adaptors for use at liquid-transfer points
- All Midland railcar products have been designed to meet or exceed Association of American Railroads (AAR) regulations

Product Details



A-19075 Smart-Flow Pressure Relief Valve PRD152003

- Performs equally to a higher flow valve for survival in a 100-minute pool fire
- Minimizes the amount of product released that could feed a fire and potentially mitigates environmental impacts
- Flow rating: 10,730 scfm-air



B-612 Gaging Device E122005

- Multiple specific gravity gage rods available to accommodate changing commodities
 - Additional adjustment nut available for a wider range of specific gravities, allowing the use of the same gage rod
- Serial number is applied in three locations for easy identification



A-522 Ball Valve E102005

- Standard, steam-jacketed, carbon-steel and stainless-steel models available
- Live loaded and adjustable packing through the stem to reduce leaking potential
- PTFE and TFM seat material to cover a complete range of commodities
- New Seal Benefits Design:
 - Low Temperature Performance
 - Low torques across full operating temperature range



A-7200/A-7300 Top Transfer Valve E192100

- Body cap end is NPT threaded which pairs with the OES Kamlock / Kamvalock options
- Available in a 2" and 3" configuration, as well as Stainless Steel and Carbon Steel
- Virgin PTFE seals



A-210/A-212 Vacuum Relief Valves E092002A

- Unique seal design eliminates the possibility of using incorrect materials or performing improper installation
- Tamper-evident seal wire on top screws
- Pressure settings up to 5 psi and higher
- The stem is guided in two places
 - This reduces accidental cycling or "burping" of the valve due to car impact or vibration
 - Gives the valve a more consistent seal and decreases the chances of pressure leaks

FEATURE	BENEFIT
---------	---------

75 psig Repeatable Set-to-Discharge	Fast response to tank pressure
Less than 9" Above Pressure Plate	Low profile, reduced chance of shear-off
External Stainless Steel Construction	Resists corrosion and ensures reliable performance and long valve life
6-1/2" x 10-1/4" Bolt Circle	Easy retrofit
Tongue-and-Groove and Flat-Face Versions Available	Industry-standard mount

3-1/4" Bolt Circle	Reduces space requirements on pressure plate
Stainless Steel Construction	Increased corrosion resistance
Lightweight Float and Gauge Rod	Improved durability and super performance with a wide range of applications
Multiple Specific Gravity Gauge Rods Available	Accommodate changing commodities without hassle of multiple gauge rods

Main Shaft Wiper Seal	Prevents contaminants from entering seal area
Compact Design	Fits all current API adaptors and vapor fittings
Universal and Rigid Mounting	Fits all current API adaptors and vapor fittings and extends valve life
Accessible Operation	Only requires quarter turn to fully open and close valve
Unrestricted Full Port Opening	Allows high-flow rates for faster unloading

Flange X Threaded Design	For easily connecting an adapter directly to valve
Full-Bore Design	For unrestricted higher flow rates for quicker unloading
6" and 7.5" Diameter Flange	Direct replacement of competitor valve

Mesh Screen Filter	Inlet filter prevents debris from entering the seating area
Valve Poppet Reversed	Keeps sealing surface away from lading
No-Step Design	Eliminates improper cycling of the valve
Stainless Steel Baffle Available	Keeps the lading from sealing surface during commodity surges