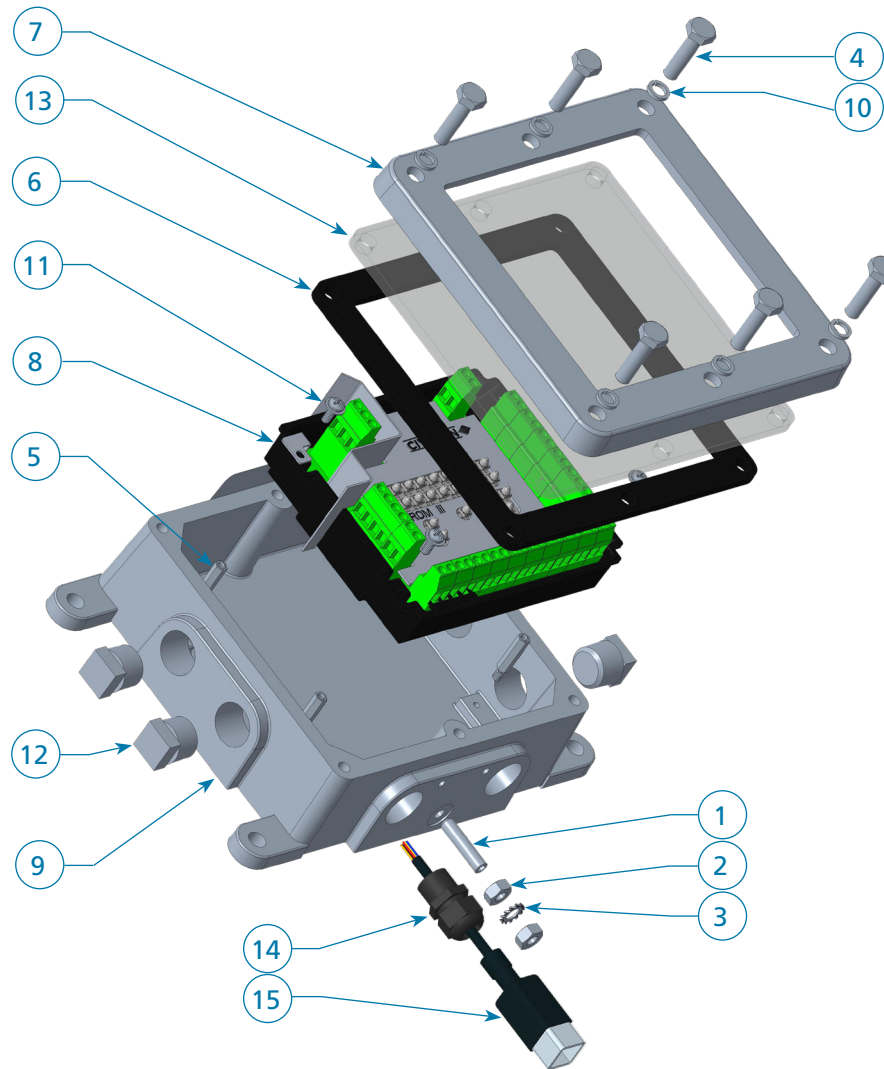


# 3308RL1 ROM III ROMLink On Board Monitor

02-14-004RP



ITEM	PART NUMBER	DESCRIPTION	QTY
1	006-FABSS0169	SET SCREW, M6 x 25mm	1
2	006-FANSS0003	NUT, SS M6	2
3	006-FAWSS0034	WASHER, SS M6	1
4	9541	SCREW, 1/4-20 x 1" SS	6
5	12710 <sup>1</sup>	STANDOFF, 3/16 HEX, #6-32	4
6	C40015M <sup>1</sup>	GASKET	1
7	C40104APC	COVER	1
8	3358-3358 <sup>1</sup>	REPL. MONITOR	1
9	D40006APC	ENCLOSURE	1

ITEM	PART NUMBER	DESCRIPTION	QTY
10	H50086M	LOCK WASHER, 1/4" SS	6
11	H50623M-2 <sup>1</sup>	SCREW, #6-32 x 3/8 SS	4
12	H51916M	PLUG, 1/2" NPT	4
13	H53206M <sup>1</sup>	WINDOW	1
14	H50221M	STRAIN RELIEF, 1/2" NPT	1
15	CIV-R100	PIGTAIL, 6-PIN, 10" LONG	1

REPAIR KITS	
3358-KIT	ROM II TO ROM III UPGRADE KIT

1 - Included in 3358-KIT



www.civacon.com ◆ 9393 Princeton-Glendale Road ◆ Hamilton, Ohio, USA 45011 ◆ Phone: (800) 560-6601

NOTE: All information subject to engineering and/or other changes. All trade names are copyrighted. Patents Pending. ©2018 Civacon. ©2018 Delaware Capital Formation, Inc. All Rights Reserved. DOVER and the DOVER logo are registered trademarks of Delaware Capital Formation, Inc., a wholly-owned subsidiary of Dover Corporation.

Rev.+, Mar 2020

DEFINING | WHAT'S NEXT